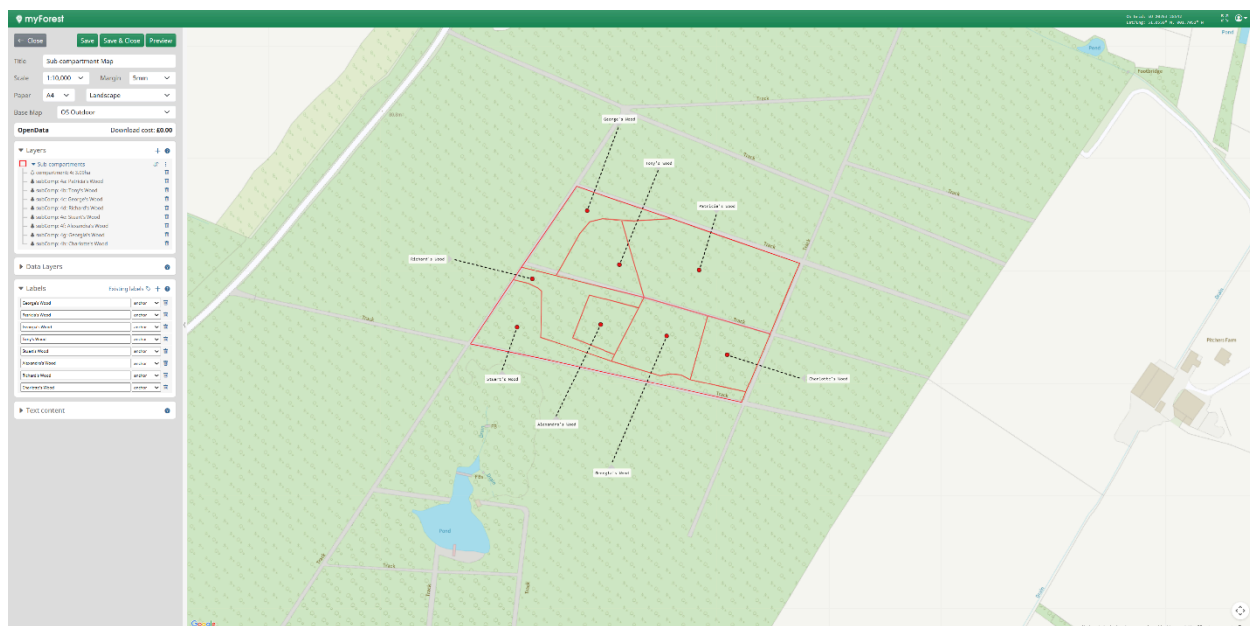


Aligning Labels in Output Maps

Labels are a critical reference when viewing your mapping in the Mapping Live View and producing Output Maps in myForest.

myForest automatically generates labels for your mapping components based on names, compartment numbers and sub-compartment letters.

You can also manually add custom labels to your Output Maps, and adjust their position with anchors (see below).



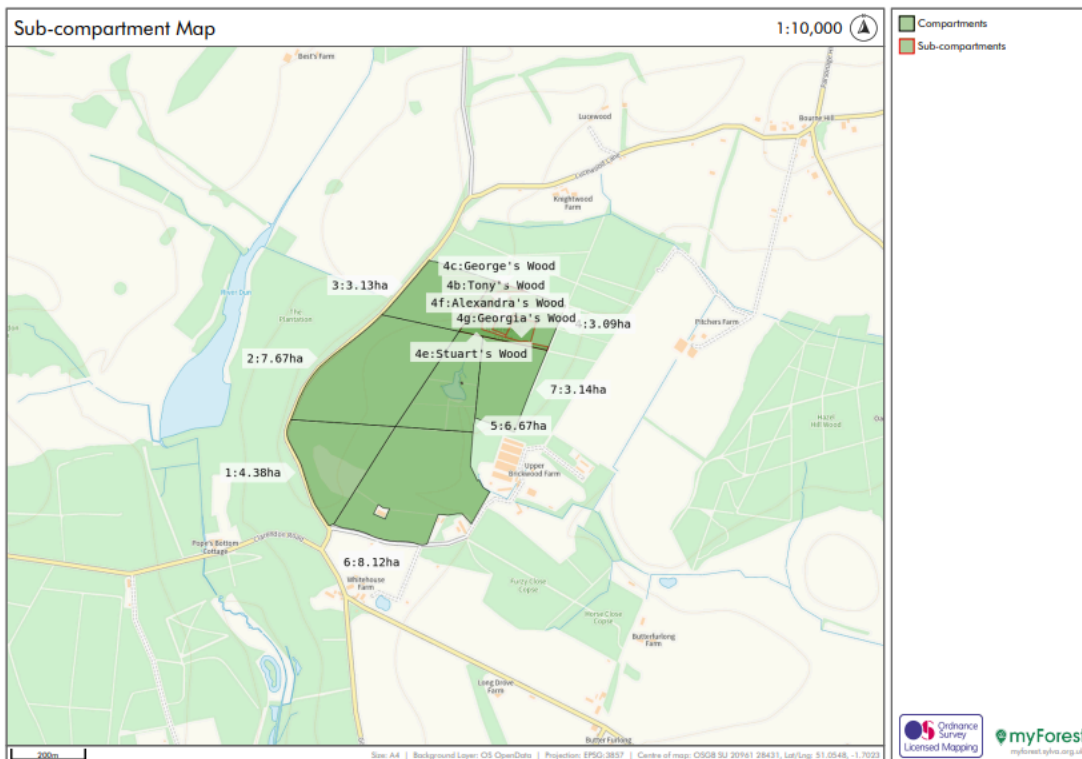
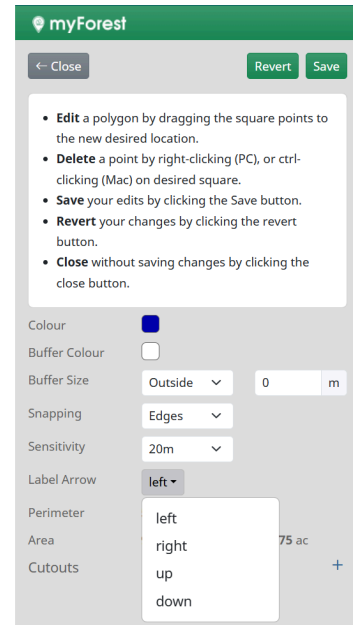
When zooming in and out of the Mapping Live View, or changing the scale of Output Maps, it can sometimes be challenging to make sure all your automatically generated labels are visible, without overlapping or obscuring map detail. However, adding custom labels can be time-consuming, so this guide will show you how to make the most of automatic labelling in myForest.

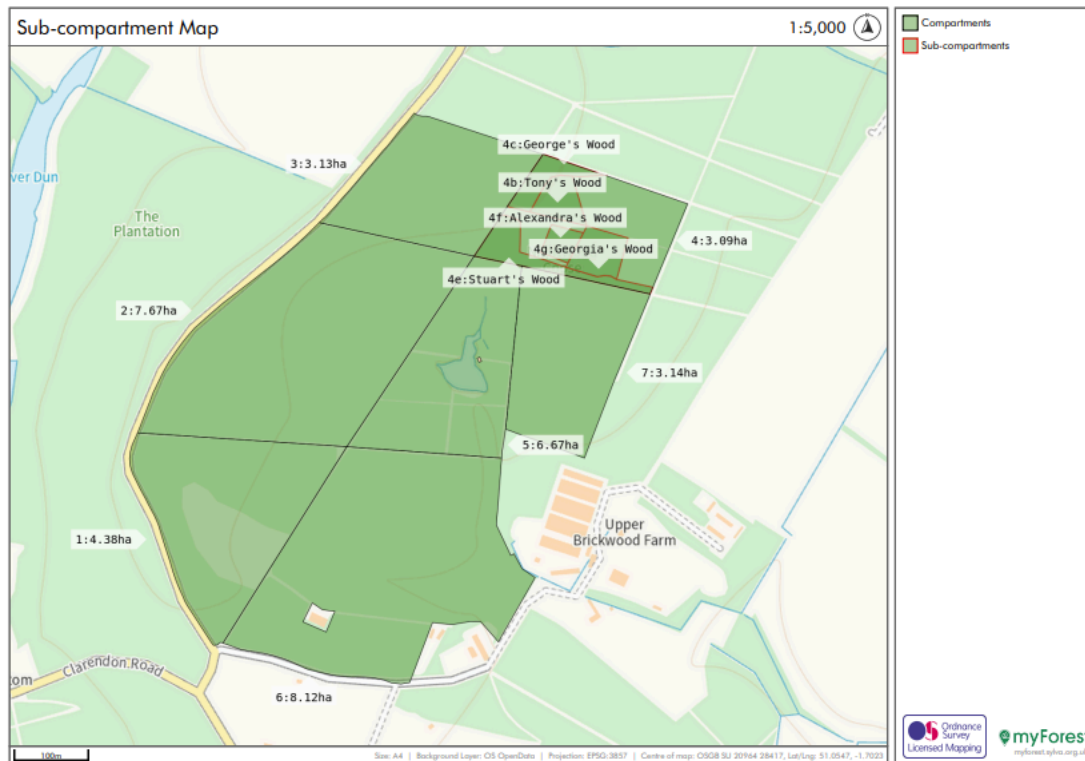
There are a number of strategies to ensure automatic labels are displayed clearly.

- Keep your labels smaller by avoiding long names, or simply not using names.

- Move the label arrow position and change its direction.

- You can do this when you edit your Compartment, Sub-compartment or Feature mapping, by dragging and dropping the arrow and selecting its direction in the options as per the screenshot to the right.
- Bear in mind that the arrow point remains static as you zoom out and the labels appear to “stretch”. Labels attached to left arrows will stretch to the right and those attached to right arrows will stretch to the left, which can increase overlap. By using the up/down position you can help prevent labels from overlapping by “stacking” them. The screenshots below show how this can allow labels that are close together to display correctly at different scales.





- Avoid using small scales in your Output Maps if you need to use labels. To maintain larger scales for more extensive areas, increase the page size or use multiple maps.
- You may need several attempts to get your labels appearing satisfactorily. If you wish to use Ordnance Survey mapping at larger than 1:3501 scale (paid plans only), it is good practice to trial download your Output Maps using a free base map so that you only pay for your mapping once.

Click [here](#) for a tutorial on working with automatic labels in myForest.

